

European Society for Social Drug Research 36th Annual Conference

1st–3rd October 2025,
Prague Czech Republic



Information for the Participants



Úřad vlády
České republiky



Institut pro kriminologii
a sociální prevenci



ESSD
European Society for
Social Drug Research

Content

Introduction	2
Dates	2
ESSD Conference	2
Pre-conference workshop	3
Social Events	4
Accommodation	4
Transport	5
Currency.....	7
Important Contacts.....	7



Introduction

The 36th European Society for Social Drug Research (ESSD) conference in Prague is hosted by the Czech National Monitoring Centre for Drugs and Addiction (Drug Policy Department, Government Office of the Czech Republic) and the Institute of Criminology and Social Prevention.

Local organisers would like to share the practical details and tips with ESSD 2025 Conference participants to their make stay in Prague as smooth as possible.

Dates

30th September 2025, 2–4 p.m., Pre-conference Writers' workshop

1st–3rd October 2025, ESSD 2025 Conference (2 and a half days)

ESSD Conference

Conference Venue:

The ESSD 2025 Conference will be held at the Lichtenstein Palace (Lichtenštejnský palác).

Address of the meeting venue is:

Liechtenstein Palace
(Lichtenštejnský palác)
U Sovových mlýnů 506/4
118 00 Prague 1, Czech Republic

See the location on [Google Maps](#).

For details about the meeting venue, see:

<https://vlada.gov.cz/en/urad-vlady/dalsi-objekty/lichtenstejnsky-liechtenstein-palace-21437/>

How to get to the venue:

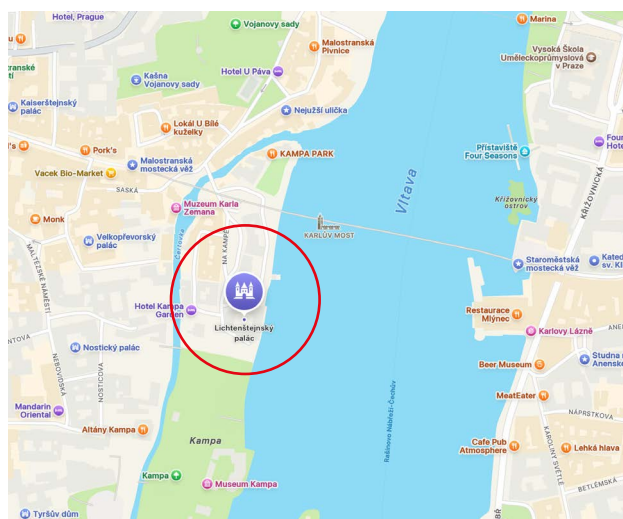
The venue is located within a 10-minute walk from the metro station “Malostranská” on Line A (Green) or tram station “Malostranské náměstí”, (tram 2, 12, 15, 18, 20 and 22).

On-site check-in:

Starts on 1st October at 8:30 a.m. at the front desk of Liechtenstein Palace (meeting venue). The conference closes on 3rd October at lunch time.

Refreshments:

Small refreshments during the coffee breaks will be arranged by the local conference organisers. Buffet lunch will be provided by the local conference organisers on 1st and 2nd October.



Pre-conference workshop

Title: Writing for social science drug and alcohol journals for early career researchers with D:EPP Editors-in-Chief:

The purpose of the workshop is to equip drug scholars with the skills and know-how to successfully publish peer-reviewed articles in drug policy relevant journals. The workshop will be relevant for scholars engaged in both qualitative and quantitative research and will be of particular interest to Early Career Researchers.

The Writing for Journals Workshop will follow the journey of a paper from submission to publication, including discussion of: what makes a good paper, editorial processes, responding to reviewers and revisions, and final product.

The Workshop will be facilitated by senior experts, with vast publishing and editorial experience. Workshop facilitators are Editors-in-Chief of Drugs: Education, Prevention and Policy journal:

- Professor Torsten Kolind, Centre for Alcohol and Drug Research, Aarhus University, DK,
- Professor Karen Duke, Co-Director of the Drug and Alcohol Research Centre, Middlesex University, UK.

Participants are welcome to send questions and queries related to publishing papers to the workshop facilitators prior to the workshop; please send them to: tk.crf@psy.au.dk. These questions will then be dealt with at the workshop.

Separate registration for the pre-conference workshop is required via registration form, capacity is limited.

Pre-conference workshop venue:

The workshop will be held at the premises of the Government Office of the of the Czech Republic (Drug Policy Department), meeting room on 1st floor.

Address of the meeting venue is:

Rytířská 539/31 (Rytirska street),
110 00 Prague 1, Czech Republic

See the location on [Google maps](#).

How to get to the venue:

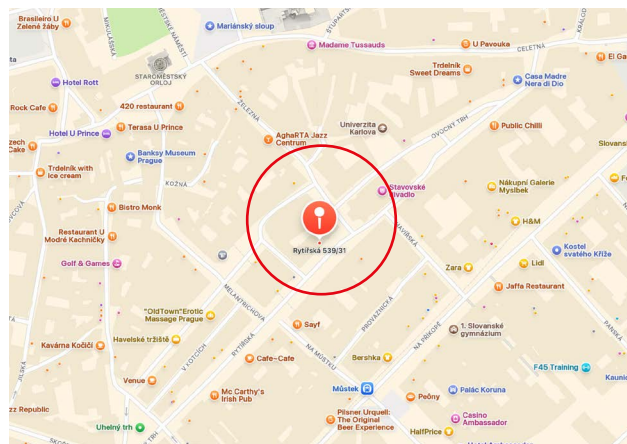
Metro Line A (Green): Můstek station, 3 mins walking distance, Metro Line B (Yellow): Můstek station, Náměstí republiky station (500m, 7 mins walk) or Národní třída station (500 m, 8 mins walk)

On-site check-in:

Starts on 30st September at 1:30 p.m. at the front desk of the Government Office venue. After registering, please wait for a staff member to accompany participants to the meeting room. The workshop starts at 2:00 p.m. and lasts for 2 hours.

Refreshments:

No refreshments will be arranged by the local organisers. However, shops, cafeterias and restaurants are available in the walking distance to the meeting venue.



Social Events

Participants are warmly invited to attend the accompanying program following the conference sessions. More details will be announced

- Get-together in a restaurant in city centre on Tuesday September 30, 2025 (participants are kindly asked to cover their own expenses, on the spot). Venue to be confirmed later.
- Social Event: Pragulic Guided tour “[Experience Prague through the eyes of homeless people](#)” on Wednesday October 1, 2025 (participant own payment, in advance via registration form).
- Dinner on Thursday October 2, 2025 (participant own payment, in advance via registration form). Venue: [Café Therapy](#), Školská 30, Prague 1. Founded in 2005, Café Therapy is the first social enterprise providing sheltered employment in the Czech Republic. It employs clients of NGO SANANIM that provides support to people who use drugs.

Accommodation

It is advised for delegates to book hotels with direct connection to the metro station “Malostranská” or tram station “Malostranské náměstí” which is situated within walking distance (aprox. 10 minutes) from the Liechtenstein Palace. Participants are expected to book their rooms at the hotel of their choice. The organising team does not have any special prices agreed with hotels. Participants have to rely on booking.com and/or airbnb.com. It is recommended to proceed with the hotel reservation as soon as possible. The expenses for accommodation are not covered by the organisers.

Recommended hotels within short walking distance / direct connection by public transport:

- **Pytloun Kampa Garden Hotel Prague, 4*** – U Sovových mlýnů 9, Prague 1, 118 00
<https://www.pytlounkampagardenhotel.cz/en/>
- **Design Metropol Hotel Prague, 4*** – Národní 33, Prague, 11000
<https://www.metropolhotel.cz/en/>
- **ibis Praha Old Town, 3*** – Na Poříčí 5, Prague 1, 110 00
https://all.accor.com/hotel/5477/index.en.shtml?utm_campaign=seo+maps&utm_medium=seo+maps&utm_source=google+Maps
- **ibis Praha Malá Strana, 3*** – Plzeňská 14, Prague 5, 150 00
https://all.accor.com/hotel/5211/index.en.shtml?utm_campaign=seo+maps&utm_medium=seo+maps&utm_source=google+Maps
- **Akcent Hotel, 3*** – Stroupežnického 1/253, Prague 5, 150 00
<https://akcent-hotel.cz/en>

More hotels may be found near Kampa park (5–10 minutes walking distance from the venue), however this could be a more expensive location. Affordable hotels may be found near “Anděl” station (15–20 minutes distance by public transport).

Transport

Travelling costs are not covered by the organiser. Participants are responsible for their own travel arrangements to and in Prague and cover their travel expenses.

Airport:

When travelling to Prague by plane, you will land at the Václav Havel Airport Prague. In order to reach the city centre, you can choose either a taxi (Uber, Bolt) or a bus. It takes about 30 minutes to reach the city centre by taxi and approximately 40–50 minutes by Prague Public Transport.

Transit from and to the airport is provided by buses 59, 100 and 191.

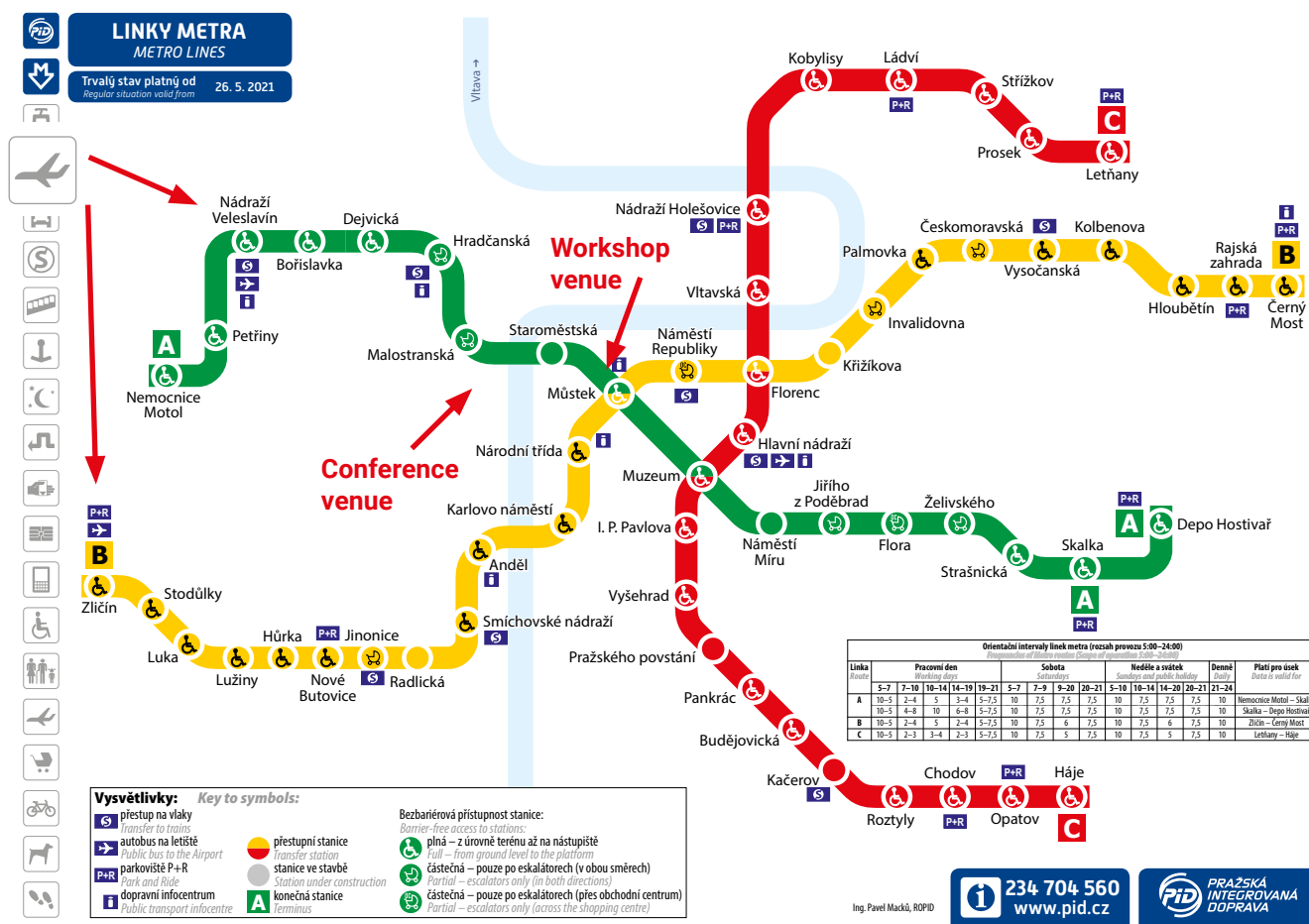
- **Bus no. 59** direction to Nádraží Veleslavín (final stop), change for metro Line A
- **Bus no. 100** direction Zličín (final stop), change for metro Line B
- **Bus no. 191** direction Anděl (final stop Na Knížecí, metro Line B)

At night, you can take the bus **907** or **910**. It is worth mentioning that the metro lines do not run between 0:00 p.m. and 4:30 a.m.

For details about the public transport from the airport, see: [Public Transport Buses | Václav Havel Airport Prague, Ruzyně](#)

For more info on metro lines, see: <https://www.praguehere.com/metro>

Taxi (Uber, Bolt) is an option for getting from/to the airport. Official info on taxis from the airport may be found on the airport website: <https://www.prg.aero/en/taxi>

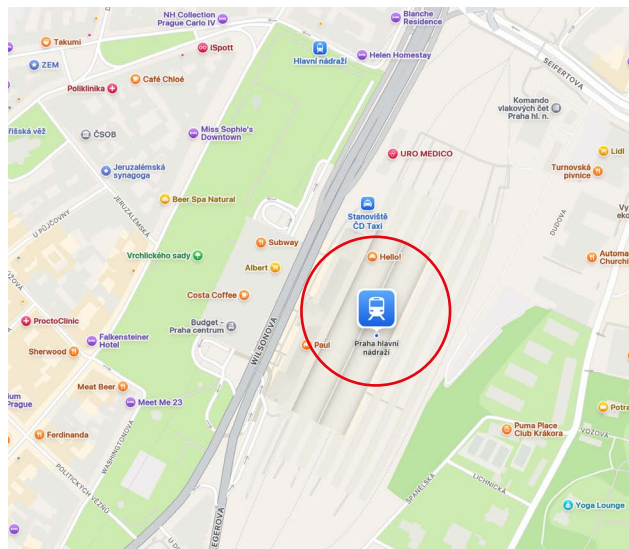


Train station

In case you travel to Prague by train, you will arrive at the Prague Main Railway Station. The metro station Hlavní nádraží, Line C (Red) is located directly in the building of the railway station.

For tram (number **5, 7, 9, 10, 15, 26**) connections you have to cross the park situated in the front of the railway station.

Alternatively, you can also take a taxi (Uber, Bolt).



Prague Public Transport

Prague Public Transport is a great option for getting around Prague ([Getting around Prague – Prague Portal – MHMP](#)). Local public transport is an integrated service. Thus, you can use the same ticket for the trams, metro or buses.

Prague Integrated Transport tickets can be purchased from vending machines located at the entrance of metro stations, at some bus or tram stops (including e.g. at the airport bus stop), at information centres and sales points in metro stations, and in some newsagents (Trafika, Relay shops or tobacco shops called Tabák). You can easily pay by credit card contactless even inside the tram.

It is worth mentioning that a ticket must be validated by the stamp machine inside the bus and tram or by validator near the vending machine at the entrance of metro stations.

Tickets can be purchased for 30 minutes, 90 minutes, 24 hours or 72 hours. Time starts with the validation by the yellow machine inside the bus, tram or entrance to the metro station. The ticket can then be used for as many journeys and means of transport as you wish within the time limit. For travel from the airport, it is better to buy a ticket for 90 minutes, otherwise 30 minutes is ok within the city centre.

Ticket prices:

Single ticket costs 30 CZK (EUR 1,20) for 30 minutes, 40 CZK (EUR 1,60) for 90 minutes.

Short-term tickets	Full price
30 min.*	30 CZK
90 min.*	40 CZK
24 hours	120 CZK
72 hours	330 CZK

More details at <https://www.dpp.cz/en/fares>.

Currency

Czech crown CZK: 1 EUR = 25 CZK.

We do not recommend exchanging money at the airport, as the exchange rate there is very inconvenient. It is possible to exchange money in the city centre. However, in most of the places, credit cards are accepted without problems.

We highly recommend avoiding Euronet ATMs. They charge an unsolicited service fee.



Important Contacts

The annual ESSD conferences always take place in close collaboration with local organisers. ESSD conference 2025 local organisers:

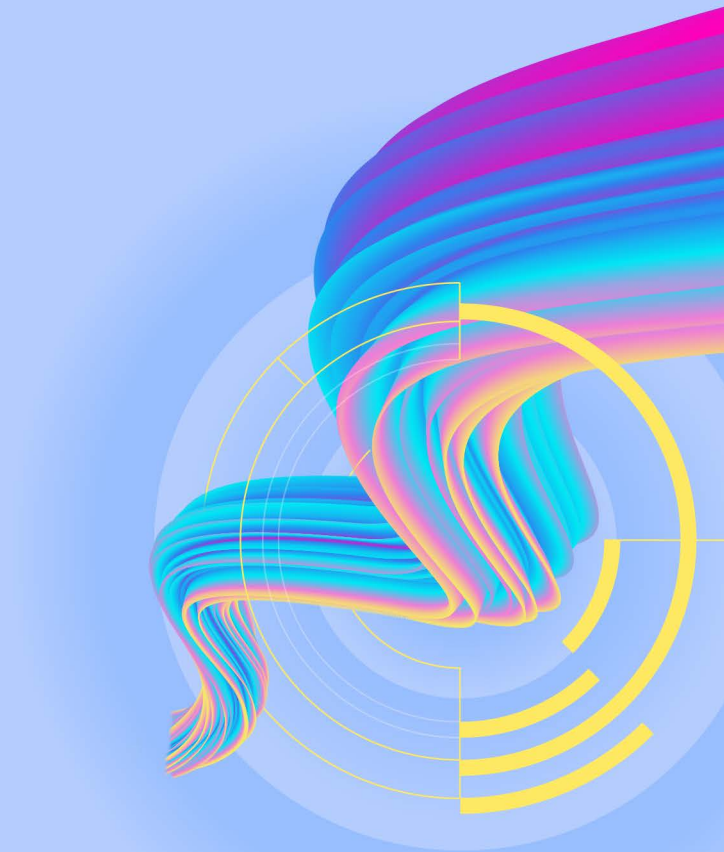
- **Pavla Chomynová**, National Monitoring Centre for Drugs and Addiction, Government Office of the Czech Republic
- **Tereza Černíková**, Department of Drug Policy, Government Office of the Czech Republic
- **Michaela Roubalová**, Institute of Criminology and Social Prevention
- **Hana Presličková**, Institute of Criminology and Social Prevention.

For any conference related correspondence, please, use the e-mail address:

ESSD2025@vlada.gov.cz.

In urgent cases do not hesitate to contact: Ms. Tereza Černíková, tereza.cernikova@vlada.gov.cz, +420 728 683 933 or Ms. Michaela Roubalová, mroubalova@iksp.justice.cz, + 420 604 479 625.

In case of an emergency, you can dial:	
112	European Emergency Number
150	Fire and Rescue Service
155	Emergency Medical Service
158	Police



Úřad vlády
České republiky



Institut pro kriminologii
a sociální prevenci



ESSD
European Society for
Social Drug Research